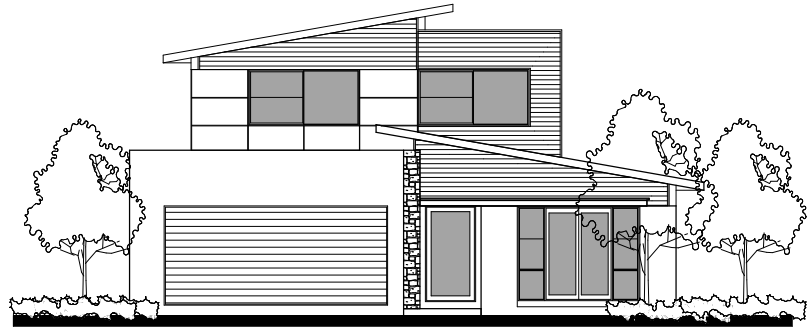


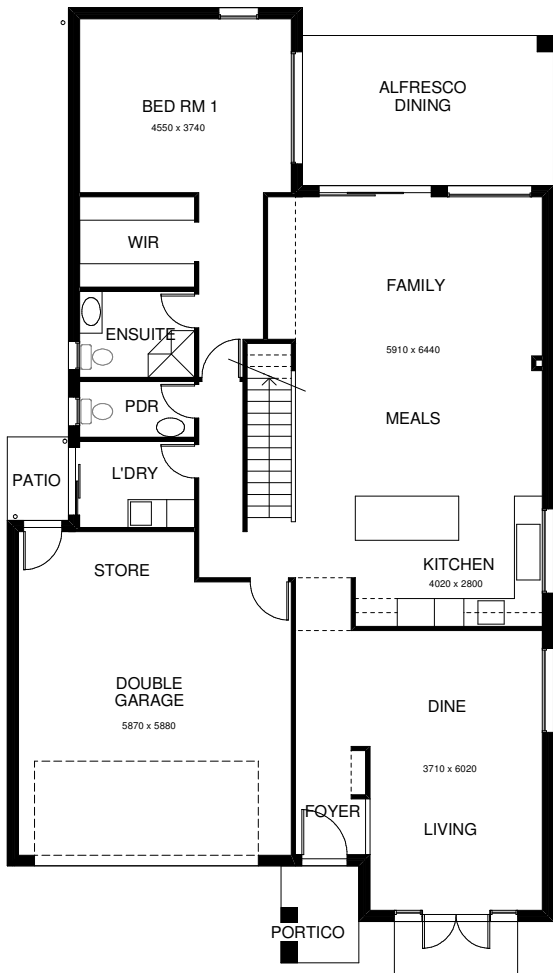


THE AVOCA 278

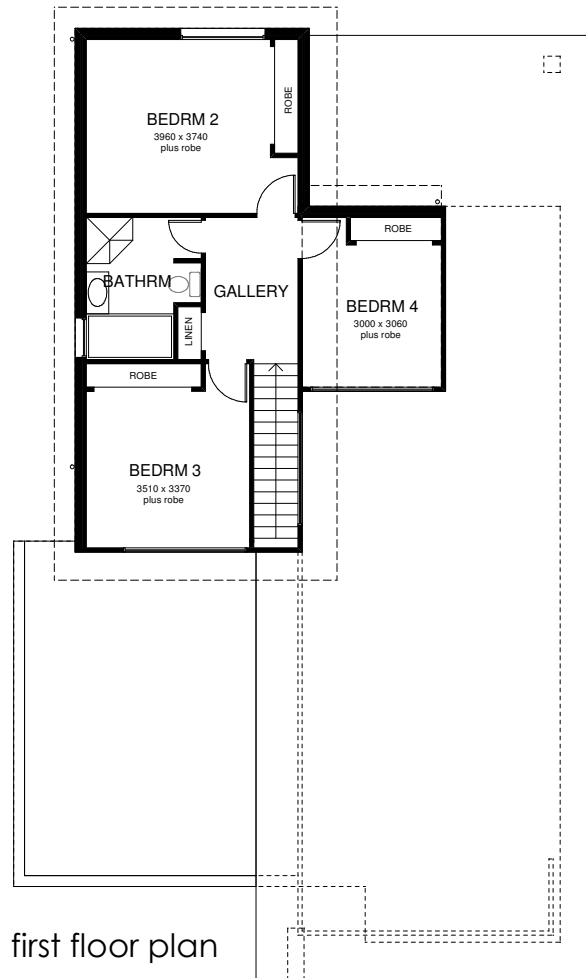
- 4 DOUBLE BEDROOMS, ALL WITH ROBE
- FAMILY BATHROOM
- ENSUITE TO MAIN BEDROOM
- POWDER ROOM TO THE GROUND FLOOR
- FORMAL AND INFORMAL FAMILY LIVING AREAS
- LARGE DOUBLE GARAGE WITH STORAGE AREA
- GOURMET KITCHEN
- ALFRESCO DINING AREA



modern facade



ground floor plan



first floor plan

Ground Floor Area	144.70 square metres
First Floor Area	67.90 square metres
Garage Floor Area	42.00 square metres
Alfresco Dining	20.70 square metres
Portico	2.80 square metres
Total Area	278.10 square metres or 30 Squares



Copyright
 The Sydney Design Company Pty Limited
 ABN 81 054 771 578
 T: 1800 468 741
 F: 02 9383 8438
 E: sydneydesign@bigpond.com.au
 W: www.sydneydesigncompany.com.au

the **sydney design** company
 building designers